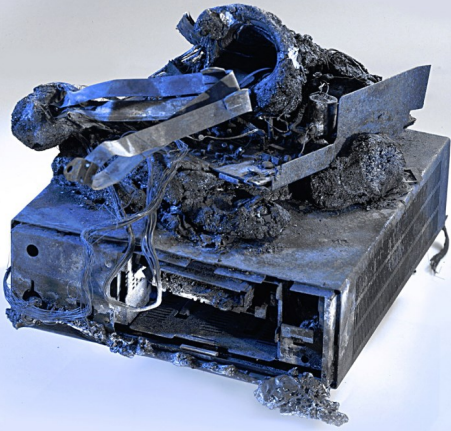


**70%** of businesses that suffer a serious data loss are out of business within two years!



Are you 100% sure that ALL of your critical business data could be recovered quickly should a disaster occur? If not, you need to put **Pretech<sup>SM</sup> Complete Backup** to work for your business today! Fusing industry leading technology with award winning hardware, **SSE's Pretech<sup>SM</sup> Complete Backup** provides protection and peace of mind for business owners that current backup solutions simply can't match. Old tapes, hard drives, and software solutions are relics of the past. Our cloud backup solutions offers fast and assured recovery of critical enterprise data, while reducing costs and freeing staff to focus on more mission-critical projects rather than tedious manual tape backup!

## Cloud Backup Benefits:

### • PEACE OF MIND

Your data is backed up locally and offsite to ensure continuous availability.

### • INCREASED PRODUCTIVITY

Recovery time is cut drastically with a cloud-based backup solution. You can rest assured that your systems will be restored quickly to avoid unproductive downtime.

### • FIXED COSTS

Our solution is provided on a fixed cost and billed monthly. No more surprise renewals.

### • SECURE DATA

With virus, spyware, and SPAM protection at all levels of your network, you can be confident that your data is secure wherever it is stored.

## WHAT'S INCLUDED:

- **IMAGE-BASED/ONSITE BACKUP:** Data is instantly virtualized in the cloud as a complete stand-by system. Should a crash or disaster occur, the SSE Pretech<sup>SM</sup> Complete Backup recreates your computers and servers instantly from the images, allowing your business to resume quickly and cutting recovery time by nearly 70%.
- **LOCAL FAILOVER:** A complete replica of all servers is created for an immediate failover solution and recovery as fast as 10 minutes. In addition, this provides redundancy for end-of-life servers.
- **CLOUD-BASED OFF-SITE BACKUP:** Data is transparently backed up during non-business hours to two separate offsite secure locations on each U.S. coast.
- **CLOUD-BASED FAILOVER:** Should your business suffer a natural disaster and become inaccessible, all servers can be recovered in the cloud to operate the business for up to 30 days until a new primary location is secured.